



**BASANT**  
**ENVELOPES-N-PRINT LTD.**

## Vision

“ To become the most trusted & largest Envelope Kit Solutions provider in India by leading the changes in the industry so as to help our clients grow ”

“ To become the largest exporter of Envelopes from India ”

## Company Profile

Basant Envelopes-N-Print Ltd. is a leading envelope solutions and offset printing service provider in Mumbai, India. With 26 years of experience in providing services to various sectors of industries, Basant Envelopes-N-Print Ltd. specializes in handling any envelope campaign from start to end. We have served more than 1,000 customers, from large corporations to emerging companies. Our customers represent a broad spectrum of industries including Banks, Financial Corporations, Telecommunication, Corporate, Publications, Registrars, etc.

Time and again, our clients have counted on us to produce the industries' "best". Our enthusiasm and facilities meet the most demanding and challenging requirements. We strongly believe in our motto of **Quality, Committed & Prompt Service** and every employee in the company strives to provide the best of the services to our clients. It is our focus on getting the job done right that assures customers that they will receive the highest quality envelopes in the shortest time frame and be comfortable knowing that we will meet all of their needs.



# Services & Infrastructure

Through our investments in infrastructure, machinery, people and processes, we have developed capabilities and resources that can produce 6 lakh envelopes & 7.5 lakh print impressions per day. Our printing press and envelope manufacturing unit is spread across 25,000 sq. ft and is located at Greater Mumbai and Navi Mumbai.

Entire range of envelopes is available with modifications and variations to suit clients' needs, including:

- Wide range of Envelopes (Glossy Art, Maplitho, Clothline, Kraft, Plastic, Bitumenised, Polynet, Inside foam, Bubble Envelopes)
- Varied colours and almost any size of envelopes
- Shapes – American, Official, Kodak, Single Bag, L-shaped
- With or Without Printing
- With or without window patches
- With or without lamination
- Gumming options of Dry (Re-moistenable) gumming or Peel-n-Seal

## Our Services

### Customized Envelopes

Envelopes cover a wide variety of commercial, office and personal uses and applications. The quality, style, size of an envelope depends a great deal on its demands of application. Envelopes are generally used to transport the encased material safely to its destination. It is also used occasionally to promote a particular brand and thus is also a means for advertisement. Hence, the envelope needs to be of good quality and strength to serve the purpose.

Through our investments in people, processes and technology, we give life to your tailor-made designs and envelope requirements.

### Machine-made Envelopes

This is a specialized application where an envelope needs to meet specific technical requirements in order to accept the folded forms in automatic insertion machines. These envelopes are generally characterized by high volumes of mail and can be manufactured only through machines. We have invested in state-of-the art machines to fulfil these requirements and hence have a high acceptance rate on automatic insertion lines.

E.g. Bank statement envelopes, Billing envelopes, Other statements, etc.

### Complete kit solutions

(End-to-end kit fulfilment services)

Many a times, procuring different printing materials like Envelopes, Notices, Brochures, Booklets, Leaflets, Card Pouches, Postal Ballot, Continuous Stationery, etc. from different vendors is a very difficult job for the company. Moreover, collating them after sourcing is an equally tedious task.

Our company provides complete kit solutions for such requirements. Having production capabilities to manufacture all components of a kit, we help you to reduce your burden, cost of warehousing, and time as you can have the final product delivered to you through single point of contact.

We have expertise in running end-to-end printing and envelope campaigns including:

- Postal Ballot kit (Outer Envelope, Postal Ballot form, Business Reply Envelope and Notice)
- Dividend and Interest Warrant (Envelope and Warrant)
- Credit/Debit Card kit (Outer Envelope, T&C booklet, A4 Letter, Card Holder Pouch)
- Bank Statement (Outer Envelopes and Statement Letter)

### Commercial Printing

(Offset, Web and Variable Data Printing solutions)

#### Offset

Our offset machines print quality jobs for various commercial applications from letterheads, base stationery, notices, forms to brochures and calendars.

#### Web

Web printing is generally used for quick completion of very long-runs. In addition to the benefits of its speed, our web printing machine can cut, fold and perforate during the run. Quality jobs of Newsletters, Books, Diaries, Magazines, Notices, etc. are printed on our Web machine.

#### VDP

VDP enables mass customization of documents at a good speed. It is generally used for Direct Marketing, Customer Relationship Management, Advertisement, etc. by personalizing the documents. For E.g. Name, address and other details of a customer on a notice, bill, invoice, form, etc. Long and short runs are easily pulled off with the help of our 12 VDP machines.



## Existing list of Machinery

### Pre Press

- Complete Plate Making Unit

### Press

- Heidelberg - 5 colour (2 Nos.) - 28 X 40 inches
- Heidelberg - 4 colour - 19 X 26 inches
- Heidelberg - 2 colour - 23 X 36 inches
- Tek 56 - 1 colour (2 Nos.) - 25 X 36 inches
- Canon and HP VDP Machines (12 Nos.)

### Post Press

- W+D Automatic Envelopes Manufacturing - Side Pasting (6 nos.)
- W+D Automatic Envelopes Manufacturing - Center Pasting (4 nos.)
- W+D Window Pasting Machines (4 nos.)
- Wooden Punching Machines (5 Nos.)
- High Speed cutting machines (3 Nos.)
- Lamination – Gloss and Matt (2 Nos.)
- Complete Binding Setup
- Peel-N-Seal Machines (2 Nos.)

# Experience & Values

## *Valued Relationship*

*One judges the value of an envelope company with the value of its relationship.* We have always built our business on superior customer service and our goal is to provide you with the best experience possible. We have forged a multitude of long-term relationships with our customers and vendors. We have tremendous versatility and flexibility in finding the best solution while remaining price sensitive. Our expertise means time and cost savings for you. We know it takes hard work to keep a customer and we thrive to build a long-term, mutually beneficial working relationship with our clients and vendors. Above all these, we look forward to being the *GO TO* company you rely on for all your Envelope and Printing needs.

## *Prompt Service*

*Rush Service is our expertise,* we know your need for speed. We excel in quick turnaround of converting of your custom envelopes. At Basant Envelopes-N-Print Ltd. our promise to deliver on time is kept. It doesn't matter how many or what size or how often you order. Your needs are our top priority. Our company can provide a high impact quality envelope at a competitive price and when you need it.

## *Unsurpassed Quality*

We strive to become partners in our customers' success by providing consistent high quality on a timely basis at a fair price. It's not just that our envelopes look good; it's that they perform as they are intended to function. Our envelopes fold perfectly, the glue sticks, paper is evenly coloured, patches properly glued and ink laydown always consistent. If you are looking for *trouble-free* envelopes that look good and are priced right, then your search ends at us.



## Capital Advantage

The Capital Advantage in working with us is based on a unique combination of our strengths:

**A One Stop Shop** - Any Envelope, any quantity, any size. From standard plain white envelopes to complex bespoke envelopes made to specific requirements.

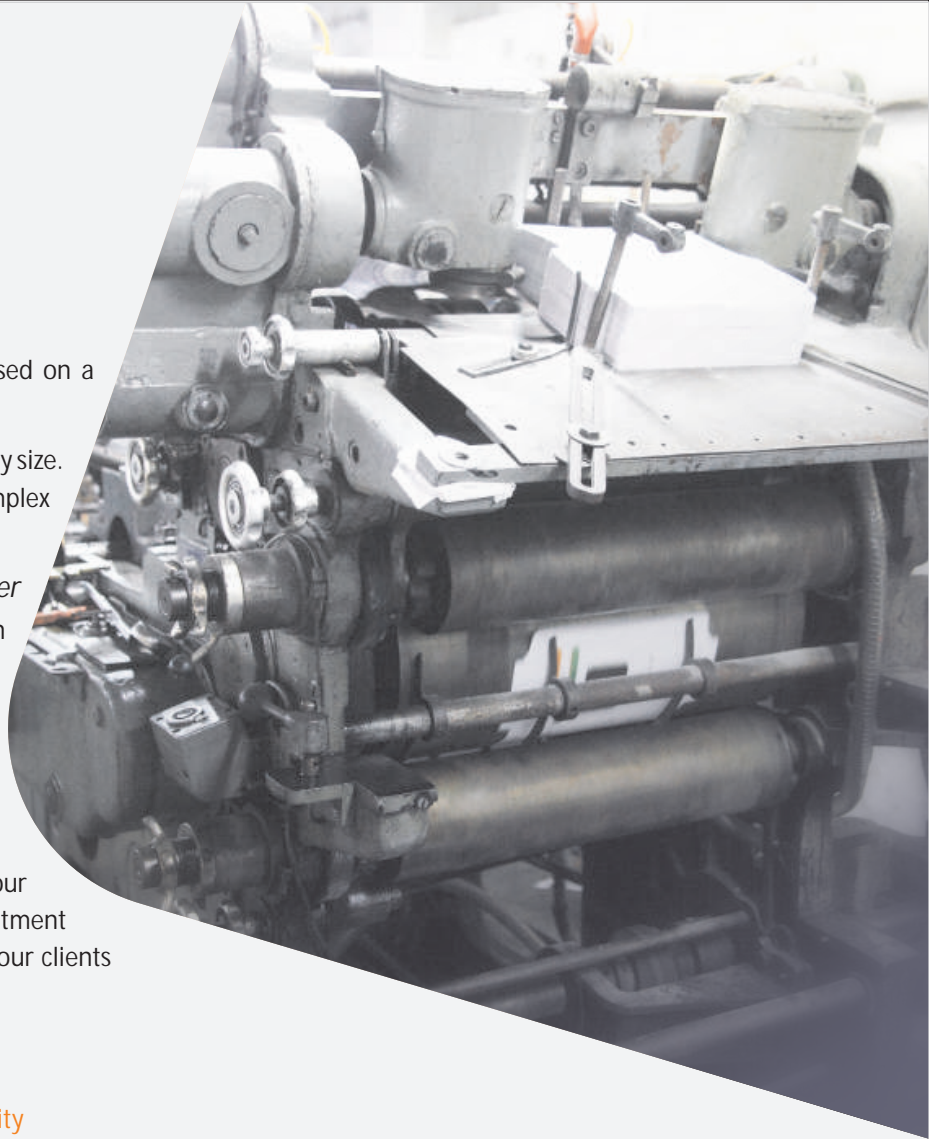
**Exclusively a specialist envelope manufacturer**

- This allows us to offer new levels of customization and flexibility in our products and services.

**Located in Mumbai** - Financial capital of India and a major export hub - This enables quick deliveries with short lead times for corporations exports to Middle-East, Europe and Africa.

And to cater these values and experiences to our clients, we need to be committed, be it commitment towards quality, fast turnaround time or helping our clients grow by providing them the best service through

- Efficient production
- Diverse equipment
- Large printing and envelope manufacturing capacity
- Strong focus on service and quality
- Quick turnaround time



## Key Clients List

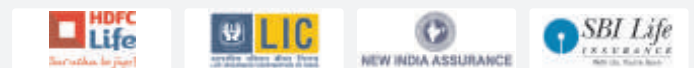
### Banks



### Mutual Funds



### Insurance



### Registrars

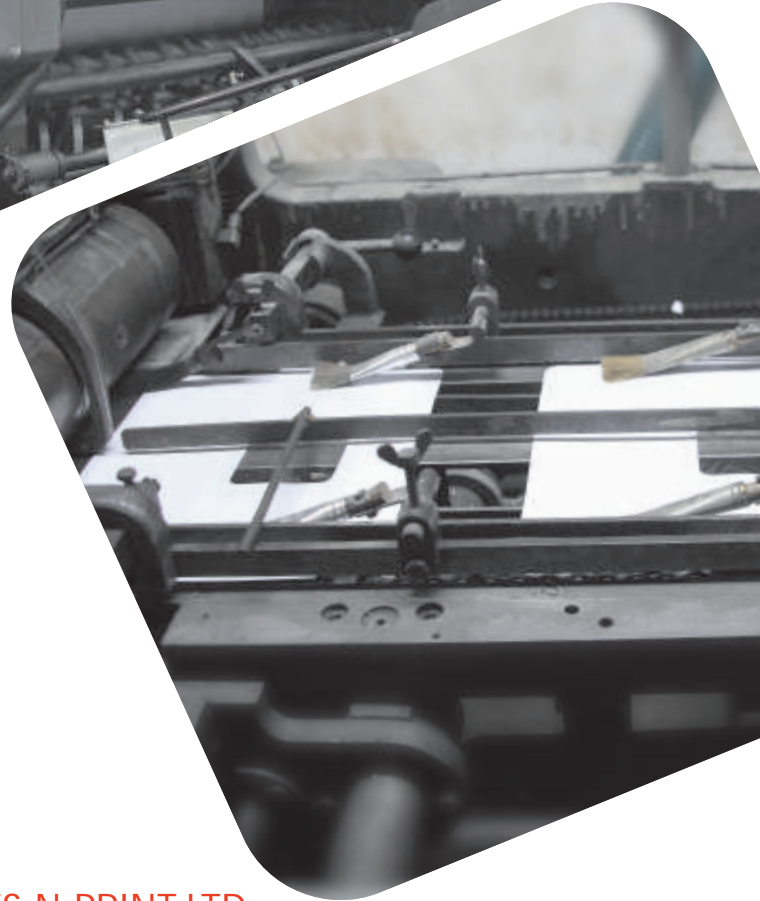


### Corporates



### Telecommunication





## BASANT ENVELOPES-N-PRINT LTD.

Regd. Office: Bombay Mutual Building, 36, 2nd floor, D.N. Road, Fort, Mumbai - 400 001

Administrative Office & Factory unit I: 8, Shiv Ashish, Maulana Azad Road, Saat Rasta,  
Near Bank of Maharashtra, Jacob Circle, Mahalaxmi, Mumbai - 400 011.

Factory unit II: Plot No. D-30/13, Turbhe M.I.D.C, Opp. Allana Cold Storage, Navi Mumbai - 400 703.

Factory unit III: Plot TSL No. 823, Shivshakti Nagar, Turbhe Stores, Near Ambedkar School,  
Turbhe, Navi Mumbai - 400 705.

W.: [www.basantenvelopes.in](http://www.basantenvelopes.in) / E.: [benpl@rediffmail.com](mailto:benpl@rediffmail.com) / T.: (022) 2308 9237/ 2307 9203

Mr. Suresh Kabra  
Managing Director  
+91 98200 98616

Mr. Gopal Krishnan  
Sales Manager  
+91 98332 56456

Mr. Devesh Kabra  
Sales Executive  
+91 91676 56759